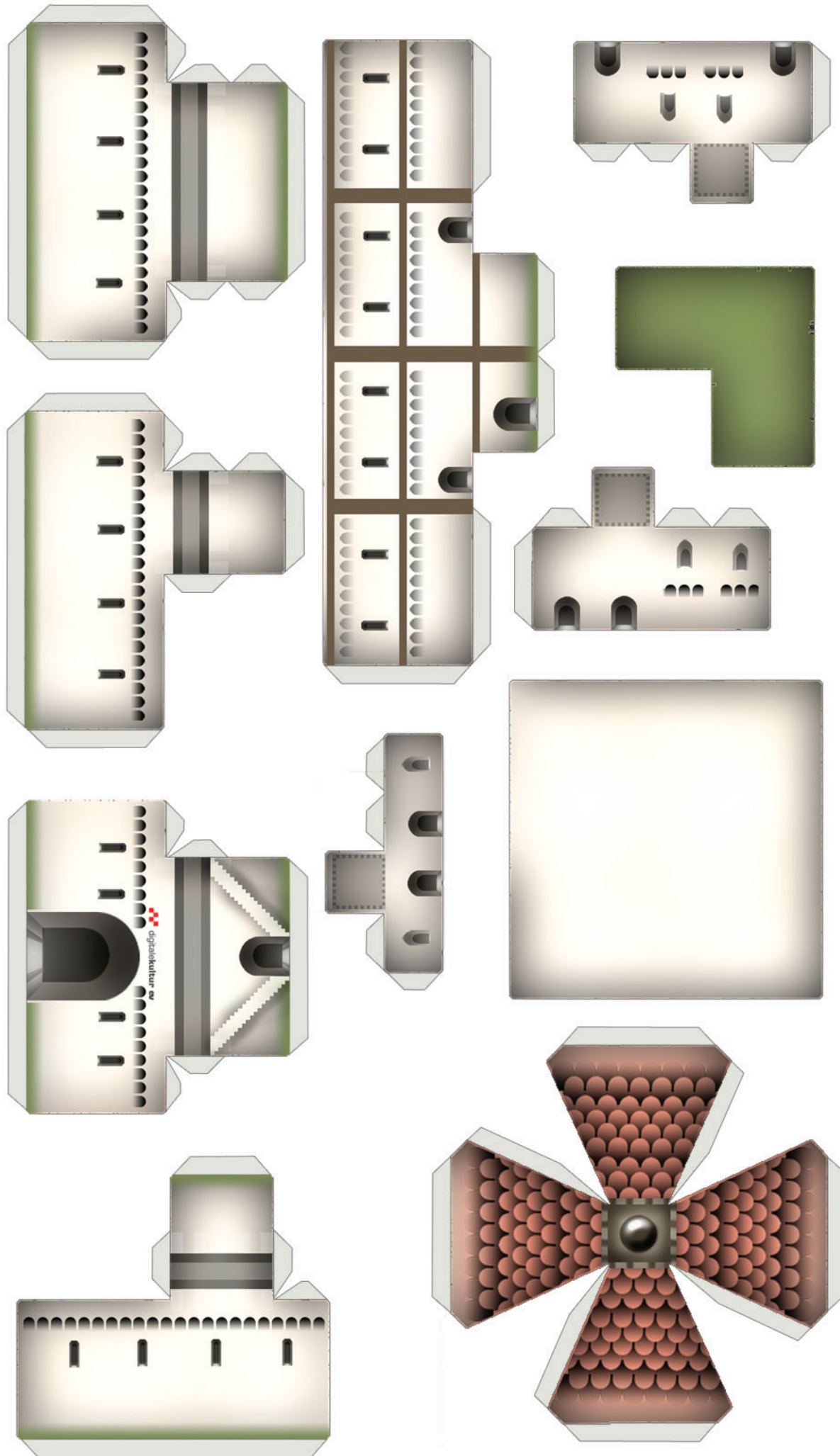
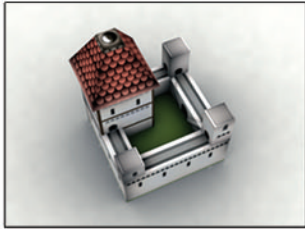


EVOKE 2004 / TOY MODEL #3



INSTRUCTIONS

For best performance use a razor-blade as a cutting-device instead of scissors.

Fold each crease multiple times, to achieve appropriate flexibility when glueing it together.

The recomend order to process this is:

- 1.) Cut out the big tiles in a "raw pass", eliminating all parts that arent used. Remember to keep the "Instructions"-text intact, if required.
- 2.) Cut out all the notches and small details in a second "fine pass"
- 3.) Fold all the inner creaseses.
- 4.) Fold the notches.
- 5.) Apply glue.
- 6.) Let it dry.
- 7.) Iterate 5.) and 6.) Until done.

It's best to "divide and conquer" and apply steps 1.)-7.) to the tires and the roof separately. By the time both are stable, they can be merged. Part 4, the bottom, is applied in the last step.

It has shown that the mean time required for all steps is around two hour for medium working-precision.

Concept & Realisation: NK-complete (noize@gmx.net)
In 2004. All rights reserved.

 digitalekultur e.V.

